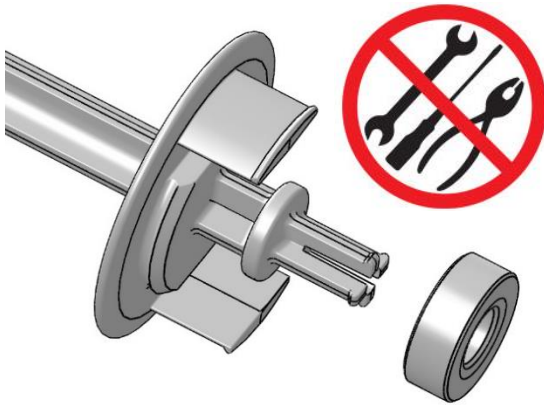


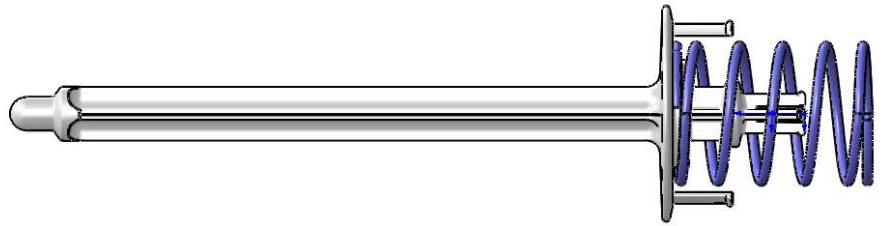
## QUICK REFERENCE GUIDE: MODELS 406-AN and 398-CN DISPENSERS

Please follow these tips to get the best performance from your Ketchup and Mustard Dispensers

### Assembly:



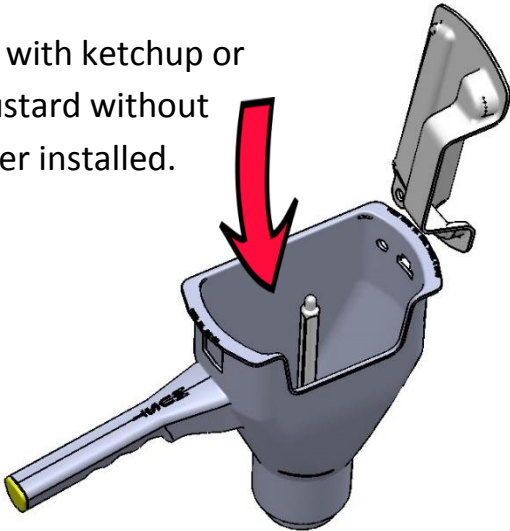
Install and replace piston rings and springs by hand, do not use tools or sharp objects. Mustard piston ring shown.



Make sure spring is snapped onto piston rod

### Priming:

Fill with ketchup or mustard without lever installed.



With a clean and empty dispenser add ketchup or mustard **BEFORE** installing lever. If dispenser has run out of sauce during use it can be refilled without removing lever.



### Washing:

**HAND WASH PARTS ONLY! DO NOT PUT PARTS IN DISHWASHER OR POWER SOAK.**

Read Operation Manual for full details on use and care of dispensers.