



SWEDISH INNOVATION, QUALITY & DESIGN

En

Pure performance by Granuldisk®

Lean Wash Center®



GRANULDISK®

X2

Universal washing solution
for cookware & dishware

Prep, cook, serve – wash!

X2 Lean Wash Center® washes all your dirty dishes from prep, cook and serve in one slim solution, making your operation more fluent, efficient, and profitable.



Superior efficiency

X2 Lean Wash Center® is a versatile solution that washes your dirty pots, pans, saucepans and utensils, just as easily as your plates, cups, mugs, cutlery, and glasses.

- + Quick start-up and refill – minimum waiting time.
- + Dual wash technology – high and low pressure pumps and unique cookware basket.
- + Minimum pre-scrapping and scrubbing required. Fast wash cycles ranging from 1 to 6 minutes.



Less cost, more profit

Waste less, cut costs and become more profitable!

- + Minimum pre-washing – no more taps flowing all day long. Saves water, energy, chemicals and labor.
- + Low consumption – only 2.6 L of water, 0.176 kWh per wash program. Automatic energy saving mode.
- + Optimized maintenance costs – instant access to technical documentation, troubleshooting guides, and maintenance history.



Plug and play

X2 Lean Wash Center® operates with standard 500 x 500 mm baskets. Smooth installation – ready to use in minutes.

- + Minimum options – all is included.
- + Compatible with most tabling – install along wall or in a corner.
- + Adjustable operating panel in eye level and adjustable working height.



As easy as child's play

Simply load your wash basket and slide it in. X2 Lean Wash Center® does the rest!



- + Low entry level – 4 icons for selecting the right wash program, auto clean feature, and QR code access to online training videos.
- + Specially designed basket for optimized washing of a multitude of cookware.
- + Hands-free hood operation (automatic hood lift version).

Future-proof

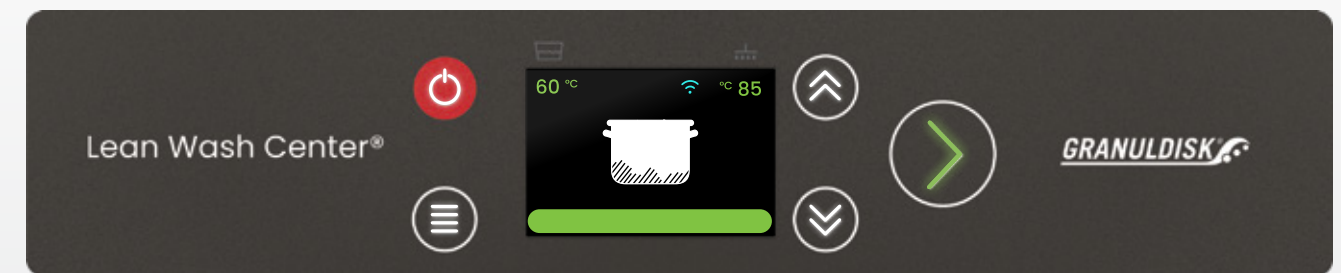
X2 Lean Wash Center® is Industry 4.0 ready. Connect and monitor one or multiple units through the app and secure HACCP traceability and compliance from day one.



- + Realtime collection of HACCP and performance data for HACCP compliance and optimization of consumption and maintenance.
- + Lean Wash Center® app for remote access – download free on Google Play or AppStore.

Maximum efficiency versatility

User-friendly interface
X2 Lean Wash Center® is intuitive to use and communicates via icons and info graphics, which eliminates language barriers.



Manual or automatic hood
Choose between manual or automatic hood lift version.



All included

- + Rear cover plate.
- + Double skinned heat and noise insulated hood.
- + Drain and discharge pump with water drain up to 800 mm.



High end wash results

Efficient dual-pump system with automatic activation of the right wash mode.

Load pots, pans, and a variety of cookware in the specially designed basket to activate the high-pressure pump and keep pre-washing at a minimum.

Load plates, mugs, forks, knives, and utensils in a standard 500 x 500 mm dishwasher basket to activate the dishwashing mode.



Compatible with standard equipment

Keep and use your existing setup! X2 Lean Wash Center® operates with standard 500 x 500 mm dishwasher baskets, and is compatible with most standard inlet and outlet tables.



Detergent and rinse aid dosing unit

Built-in liquid detergent and rinse aid dispenser with peristaltic pump. Prepared for detergent sensor installation.

EcoExchanger®

Optional efficient heat recovery system with steam reduction and condensing unit.



SIMpel

QR code with online access to operator training videos, servicing history, and troubleshooting guides.



Ergonomics

Operating panel at eye level and within easy reach. Install on left or right side, depending on your preference.



Low amps, high performance

Install anywhere, without limitations. Start-up in 9 minutes, water-change in just 4 minutes.



Hands-free operation

Foot mechanism for a hands-free and no-touch system is standard for the automatic hood lift version.



On site customizations

Adjust temperature for wash and rinse programs, personalize working height, and place the operating panel on right or left side - all fully customizable, and done on site during installation.



Placing

X2 Lean Wash Center® can be placed along a wall, or in a corner. Opt for the innovative Granuldisk® modular tabling for a lean and supportive ware washing center.



Connected HACCP compliance

The optional Wifi feature allows you to connect any device to collect, edit, and monitor information such as HACCP data, consumption of chemicals and much more.

The Lean Wash Center App can be installed on smartphone, tablet, or laptop. Available on App Store and Google Play.



Smart table concept!

Install right, left or front – choose between 4 tables and 3 rear splash guards. Combine as you like – fully reversible!

Smart, reversible and modular table concept

Combine your X2 Lean Wash Center® with easy-to-install and safe-to-use tables and keep your ware washing area compact, safe and ergonomic.

Fully reversible

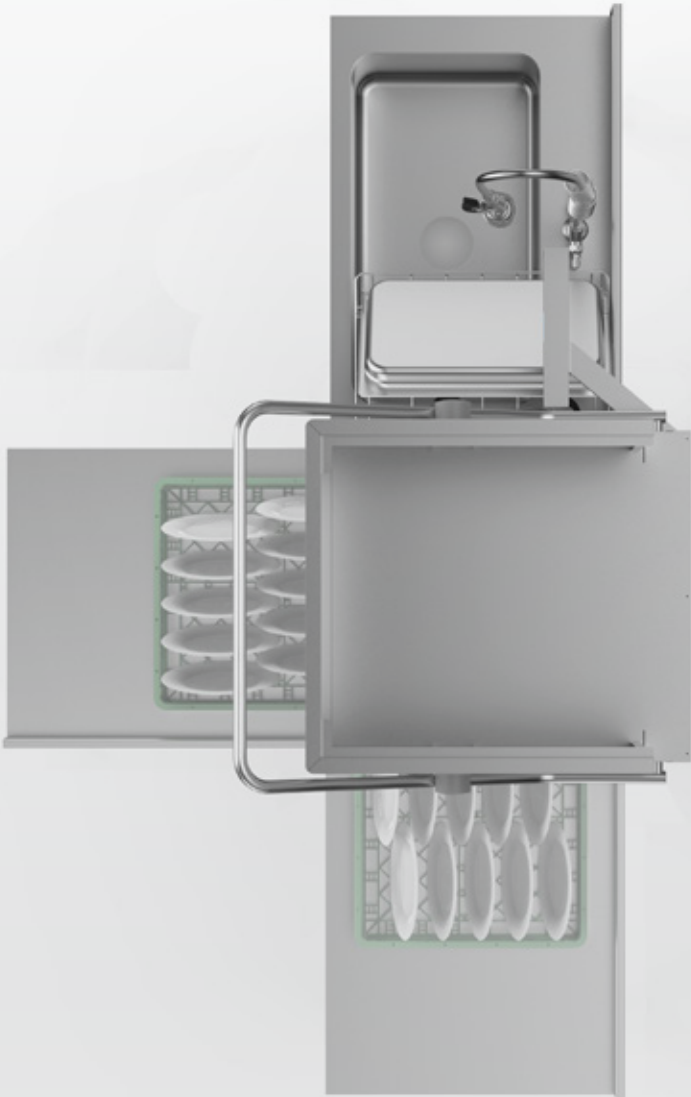
Install right, left, or front! These smart tables are fully reversible, and can easily be rearranged in a new configuration at any point in time.

Fully flexible

Adjustable working height and lots of room underneath can be used either for storage of wash baskets, or to install a water softener or under-counter glass washer.

Infinite possibilities

The concept consists of 4 different tables and 3 rear splash-guards – combine them as your need requires!



Wash baskets

Granuldisk carries baskets to wash any item you use for prep, cook, and serve. Standard delivery includes one stainless steel cookware basket, one dishware basket, and one glassware basket. Optimise your setup with additional baskets!

Cookware basket

Specially designed stainless steel cookware basket with 500x500 mm base. Capacity to load pots up to Ø 450 x H 380 mm or sub sized, 1 GN 1/1 depth 200 mm or sub-sized, or 2 GN 1/1 depth 65 mm.

Dishware basket

Standard size, 500 x 500 mm base. Capacity 18 dinner plates or 12 soup plates, max. Ø 240 mm.

Glassware basket

Standard size, 500 x 500 mm base. Capacity 25 mugs Ø 90 mm or 25 glasses Ø 90 mm.

Non-electric water softener for hot and cold water

Hard water causes scaling of the heating elements of electrical appliances, and leads to both over-consumption of electricity and increased maintenance costs.

Scaling will also impact your productivity significantly, as X2 Lean Wash Center® will run a high risk of loss of performance, and in worst case break down.

With this innovative and compact non-electric water softener, you no longer have to worry. Simply connect to water inlet temperature of 2-65 °C.

Easy upkeep

8 kg salt. Check level weekly, refill when needed.



Specification and technical details

Productivity	
Start-up time (fill and heat)	9 min. (water inlet 55 °C)
Water-change (drain, refill, reheat)	5 min. (water inlet 55 °C)
Consumption per wash program	Water: 2.6 L • Electricity: 0.176 kW
Wash modes (automatic activation)	High pressure mode for cookware or low pressure mode for dishware and glassware.
Wash programs	Cookware 3 min. • Carbonized cookware 6 min. • Glassware 1 min. • Dishware and utensils 2 min.
Cookware wash basket capacity	Pots up to Ø 450 H 380 mm or sub sized • 1 GN 1/1 depth 200 mm or sub-sized • 2 GN 1/1 depth 65 mm
Dishware wash basket capacity	18 dinner plates • 12 soup plates max. Ø 240 mm
Glassware wash basket capacity	25 glasses Ø 90 mm • 25 mugs Ø 90 mm

Standard delivery	
Manual hood lift version	Stainless steel ergonomic handle
Automatic hood lift version	Operate hood with hands-free foot mechanism or operating panel • Manual override possible
Operating panel	Right or left side - L 430 mm • At eye level and within easy reach • Waterproof TFT screen display • Wash programs symbols
Loading	Standard basket 500 x 500 mm • Usable passing height 405 mm • Working height: 860-910 mm
Construction	Stainless steel • IPX5 • Rear cover plate • Heat and noise insulated double skinned hood • Drain and lift up pump up to 800 mm height
SIMpel™	Unique QR for online access to operator training videos, servicing history, and troubleshooting guides
Additional features	AutoClean program • Energy saving mode if not used for 20 min. • Shut-down timer
Chemicals dosing unit	Liquid detergent and rinse aid dosing dispenser with peristaltic pump • Suction hoses • Prepared to detergent dosing sensor installation
Wash tank	30 L stamped tank • 8 kW heater • 2 filters
Rinse tank	12 L stamped tank • 8 kW heater
Cookware wash technology	2 stainless steel oscillating wash arms driven by motor • Removable without tool • Stainless steel nozzles • High pressure pump: 1.5 kW
Dishware & Glassware wash technology	2 stainless steel rotating wash arms driven by water pressure • Removable without tool • Printed nozzles • Low pressure pump: 1.1 kW
Rinse technology	2 stainless steel rinse arms • Removable without tool • Printed nozzles • Rinse pump: 0.18 kW
Wash water temperature	Factory setting: 60 °C • Adjustable from 35 °C up to 65 °C
Rinse water temperature	Factory setting: 85 °C • Adjustable from 65°C up to 85 °C
Starter kit	Stainless steel cookware wash basket • PP dishware wash basket • PP glassware wash basket w. large mesh
Installation kit	Supply hose 3/4" female • Drain hose Ø 28 mm • 2 m. electric cable.

Factory fitted options	
EcoExchanger**	Exhaust heat recovery with steam condensing unit • Self-cleaning function • 10°C/25°C water supply • Extends wash cycle of 30 sec.
Wifi	Enables: HACCP data collection • Control of washing parameters • Remote access with detection of defective components • Lean Wash Center App is available on Google Play and AppStore.

Installation and compliance	
Dimension* and weight	Manual hood lift: H 1950 mm x W 655 + 100 mm handle x D 745+95 mm handle • Weight, gross/net: 178/138 kg Automatic hood lift: H 1950 mm x W 655 + 100 handle mm x D 785+95 mm handle • Weight, gross/net: 190/150 kg
Electrical – standard delivery	380V/400V/415V / 3N~ / 50 Hz • 16 A / 10 kW
Electrical – optional delivery	230V / 3N~ / 50 Hz • 32 A / 10 kW
Water inlet**	55 °C/60 °C • 2-5 bar • < 4 °dH-7 °f – 70 PPM • 3/4" female
Drain	Ø 28 mm • 65 °C • Ø 50 L/min.
Heat dissipation	Total: 5.8 kW – Sensible: 2.1 kW – Latent: 3.6 kW
Heat dissipation with EcoExchanger®	Total: 4.9 kW – Sensible: 2.1 kW – Latent: 2.8 kW
Sound pressure level (ISO 11203)	< 64 dB(A)
Norms and certification compliance	CE – DIN 10534 – EN 1717 – RoHS – WEEE

* Optional Eco Exchanger® extends dimensions to H 2125 mm X W 655+100 mm handle x D 785+95 mm handle.
** If cold water supply, duration for start-up, water-change, and wash programs is extended.

Let us help you build a strong business case!

How would X2 Lean Wash Center® be profitable to you?

Get a detailed business case in 2 minutes and discover your potential savings, calculated with your unique parameters.

The perfect base for a wise decision! Sign up for a free evaluation at granuldisk.com

How much could you save by switching to a LeanWash Center?*

Adjust your current cost

Parameter	Value	Cost
Water (m³)	3,56	0,57 € daily
Energy (kWh)	0,11	0,92 € daily
Labour incl. social fees (h)	22,00	44,00 € daily

Your estimated prewash by hand cost

45,49 € Your daily cost
18.195,68 € Your yearly cost

Your cost of prewashing your pots and pans by hand on a

Period	5 years period	7 years period	10 years period
Cost	90.978 €	127.370 €	181.957 €

+ Payback in months by stopping your prewash of pots and pans by hand

7

Your estimated savings

Period	5 years period	7 years period	10 years period
Savings	79.478 €	115.270 €	168.957 €



Flexible financing

Own your product, or sign a Save per Use contract for a care-free and economic solution, in partnership with your local Granuldisk® partner.

Monthly fee includes installation, service, and maintenance.



24 months warranty included

X2 Lean Wash Center® comes with a contractual 24 months warranty.

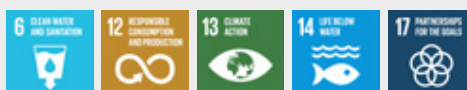
* The warranty is valid only if annual maintenance has been performed by an authorized Granuldisk service partner.

Authorized partner

About Granuldisk

Granuldisk was founded in 1987 in Malmö, Sweden, and has since been revolutionizing commercial ware washing by combining premium engineering with high passion for sustainability, to ensure a perfect wash result in just a few minutes without any need to pre-wash by hand.

Granuldisk complies with environmental and quality ISO standards, and is actively working with the UN Sustainable Development Goals.



GRANULDISK®