



ATHENA 4 R/M

SKU: 01000ATH3FRE

Refrigerated buffets with laminated wood structure. The ventilation grids of the compressor unit are cut directly into the wooden structure for elegant visual continuity. The mobile Plexyglass sneezeguard has a squared shape that allows - when closed - a open view of the stored alimnts. Furthermore the closing system foresee an anti-pich safety block. Well 26 cm deep with drain cock. Static refrigeration of the well, gas R290. Digital thermostat (2°/ 8°) and lighting with LED. Two polyamide castors with brake included. Capacity 4 GN 1/1. GN pans on request.



Ø75

GN

4 GN 1/1 up to h.200



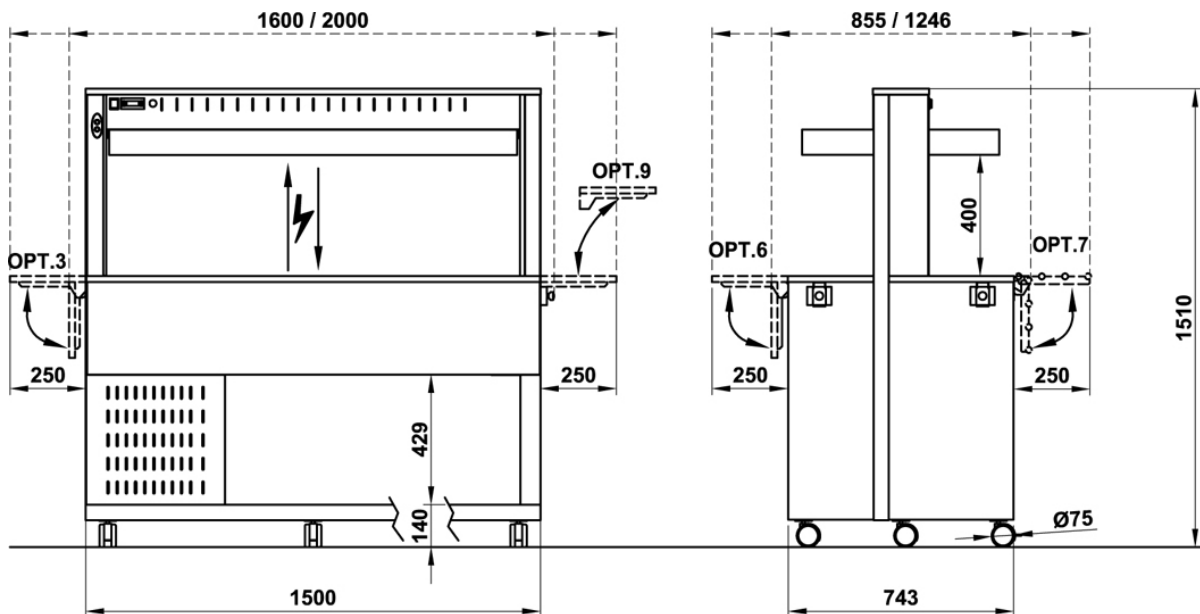
602 W



3



2



Optional/Options

OPT. 3 EN



Laminated wood folding dish-holder on short side

OPT. 3-SST EN



Foldable dish holder short side - Stainless steel

OPT. 3-TUB EN



Tube st. steel dish-holder on short side

OPT. 4 EN



Full lower closure w/doors

OPT. 5 EN



Removable display grid

OPT. 6 EN



Wooden folding dish-holder

OPT. 7 EN



Folding S/steel tube trayholder

OPT. 8 EN



Foldable tray slide

OPT. 9-A EN



Removable long tray slide on short side in laminated wood

OPT. 9-TUBA EN



Removable long tray slide on short side in stainless steel tube

OPT. 9-SSTA EN



Removable long tray slide on short side in stainless steel

OPT. 9-C EN



Removable tray slide on short side in laminated wood, for wall leaning

OPT. 9C-TUBA EN



Removable tray slide on short side in stainless steel tube, for wall leaning

OPT. 9C-SSTA EN



Removable tray slide on short side in stainless steel, for wall leaning

OPT. 10 EN



Reinforced 125mm. diam steel castors, 2 with brake

OPT. 11/FO EN



Surcharge for contrasting worktop in Formica color

OPT. 14/F EN



Intermediate floor, compartment mod. refrigerated

OPT. 15-F/LAM EN



Niche for refrigerated modules - Laminated wood

OPT. 15-F/FO EN



Niche for refrigerated modules - Formica

OPT. 16/LAM EN



Upper shelf top with increased depth and rear containing edge - Laminated wood

OPT. 16/FO EN



Upper shelf top with increased depth and rear containing edge - Formica

OPT. 17 EN



Intermediate custom module

OPT. 17CH EN



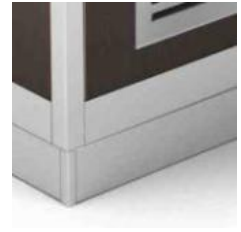
Custom head module

OPT. PZ EN



Feet

OPT. Z EN



Aluminium coated PVC feet skirting

OPT. UK EN



Surcharge for UK plug

OPT. ADS EN



Customized adhesive sticker

OPT. HZ6 EN



Compressor 60Hz

OPT. 45CUT EN



45° cut for optional 6/7/8

Finiture/Finishes

LAR - SILVER



SILVER

LRS - ROSE



STANDARD - LAMINATED WOOD

LZA - SAFFRON



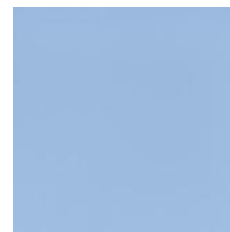
STANDARD - LAMINATED WOOD

LIM - LIME



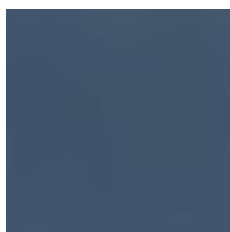
STANDARD - LAMINATED WOOD

LSK - SKY



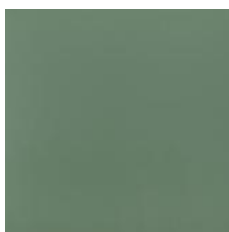
SKY

LOC - OCEAN



OCEAN

LER - IVY



IVY

LSV - SAGE



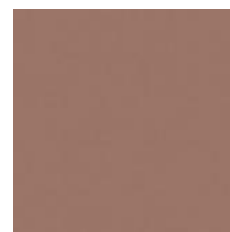
SAGE

LCP - CAPPUCCINO



CAPPUCCINO

LTC - CLAY



CLAY

LNI - NIAGARA



NIAGARA

LGR - GREY



STANDARD - LAMINATED WOOD

LBV - VEINED WHITE



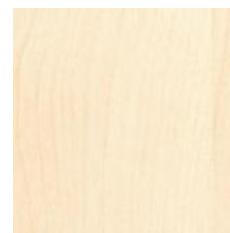
STANDARD - LAMINATED WOOD

LWS - WHITE SAND



WHITE SAND

LBE - BIRCH



STANDARD - LAMINATED WOOD

LNE - GREY FOG



STANDARD - LAMINATED WOOD

LOM - ELM



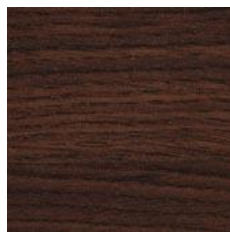
STANDARD - LAMINATED WOOD

LNO - WALNUT



STANDARD - LAMINATED WOOD

LWE - WENGE'



STANDARD - LAMINATED WOOD

LAN - ANTHRACITE



STANDARD - LAMINATED WOOD

LNV - VEINED BLACK



STANDARD - LAMINATED
WOOD