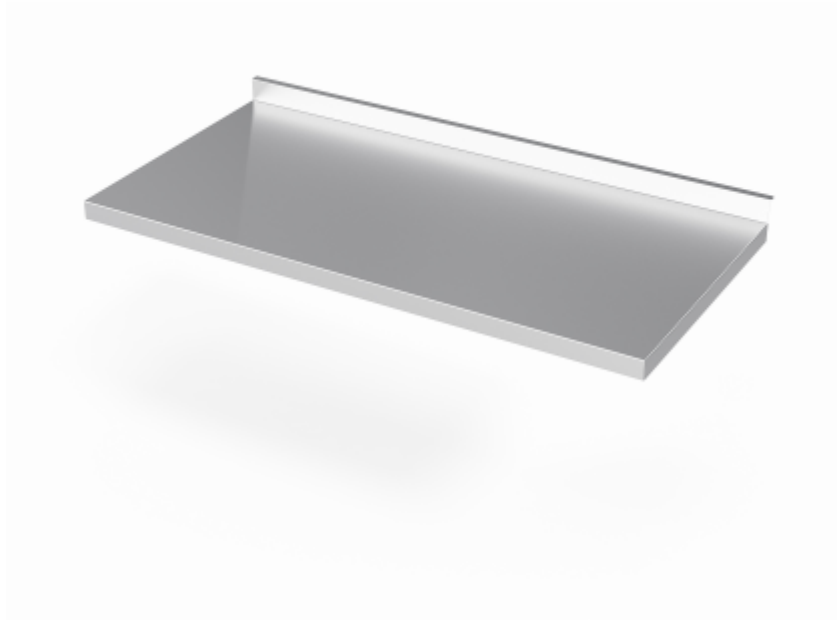


Flat Bottom Table Top (DL0-000)



Standard Features:

- Heavy duty, low noise pressed sandwich construction table top
- Max loading 120 kg/tabletop (uniform layout)
- With or without upstand
- Flat bottom stainless steel table top for mounting on laminate cupboards or equipment

Additional Features:

- Sinks with noise dampening pads
- Plumbing sets
- Deepened table top
- Customised upstand (height 40 - 100 mm)

Specifications:

Length L, mm	Width B, mm		
	600	650	700
	Model	Model	Model
400	DL0-000-40/60/4	DL0-000-40/65/4	DL0-000-40/70/4
500	DL0-000-50/60/4	DL0-000-50/65/4	DL0-000-50/70/4
600	DL0-000-60/60/4	DL0-000-60/65/4	DL0-000-60/70/4

Length L, mm	Width B, mm		
	600	650	700
	Model	Model	Model
700	DL0-000-70/60/4	DL0-000-70/65/4	DL0-000-70/70/4
800	DL0-000-80/60/4	DL0-000-80/65/4	DL0-000-80/70/4
900	DL0-000-90/60/4	DL0-000-90/65/4	DL0-000-90/70/4
1000	DL0-000-100/60/4	DL0-000-100/65/4	DL0-000-100/70/4
1100	DL0-000-110/60/4	DL0-000-110/65/4	DL0-000-110/70/4
1200	DL0-000-120/60/4	DL0-000-120/65/4	DL0-000-120/70/4
1300	DL0-000-130/60/4	DL0-000-130/65/4	DL0-000-130/70/4
1400	DL0-000-140/60/4	DL0-000-140/65/4	DL0-000-140/70/4
1500	DL0-000-150/60/4	DL0-000-150/65/4	DL0-000-150/70/4
1600	DL0-000-160/60/4	DL0-000-160/65/4	DL0-000-160/70/4
1700	DL0-000-170/60/4	DL0-000-170/65/4	DL0-000-170/70/4
1800	DL0-000-180/60/4	DL0-000-180/65/4	DL0-000-180/70/4
1900	DL0-000-190/60/4	DL0-000-190/65/4	DL0-000-190/70/4
2000	DL0-000-200/60/4	DL0-000-200/65/4	DL0-000-200/70/4
2100	DL0-000-210/60/4	DL0-000-210/65/4	DL0-000-210/70/4
2200	DL0-000-220/60/4	DL0-000-220/65/4	DL0-000-220/70/4
2300	DL0-000-230/60/4	DL0-000-230/65/4	DL0-000-230/70/4
2400	DL0-000-240/60/4	DL0-000-240/65/4	DL0-000-240/70/4
2500	DL0-000-250/60/4	DL0-000-250/65/4	DL0-000-250/70/4
2600	DL0-000-260/60/4	DL0-000-260/65/4	DL0-000-260/70/4
2700	DL0-000-270/60/4	DL0-000-270/65/4	DL0-000-270/70/4
2800	DL0-000-280/60/4	DL0-000-280/65/4	DL0-000-280/70/4
2900	DL0-000-290/60/4	DL0-000-290/65/4	DL0-000-290/70/4
3000	DL0-000-300/60/4	DL0-000-300/65/4	DL0-000-300/70/4
3100	DL0-000-310/60/4	DL0-000-310/65/4	DL0-000-310/70/4
3200	DL0-000-320/60/4	DL0-000-320/65/4	DL0-000-320/70/4
3300	DL0-000-330/60/4	DL0-000-330/65/4	DL0-000-330/70/4
3400	DL0-000-340/60/4	DL0-000-340/65/4	DL0-000-340/70/4
3500	DL0-000-350/60/4	DL0-000-350/65/4	DL0-000-350/70/4
3600	DL0-000-360/60/4	DL0-000-360/65/4	DL0-000-360/70/4

Length L, mm	Width B, mm		
	600	650	700
	Model	Model	Model
3700	DL0-000-370/60/4	DL0-000-370/65/4	DL0-000-370/70/4
3800	DL0-000-380/60/4	DL0-000-380/65/4	DL0-000-380/70/4
3900	DL0-000-390/60/4	DL0-000-390/65/4	DL0-000-390/70/4
4000	DL0-000-400/60/4	DL0-000-400/65/4	DL0-000-400/70/4